



*Gaviota reidora (Larus atricilla) (plumaje de verano)*



*Araña de seda (Nephila clavipes)*



*Águila pescadora (Pandion haliaetus)*



*Pelicano (Pelecanus occidentales)*



*Playero canchuda (Caloptrophorus semipalmatus)*



*Garza blanca (Ardea alba)*



*Garza nocturna (Nyctanassa violacea)*



*Paloma huilota (Zenaida macroura)*



*Garceta de nieve (Egretta thula)*



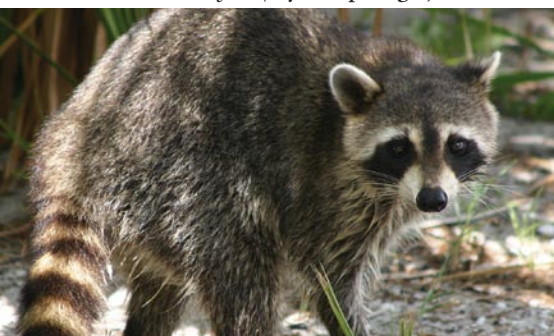
*Pico de tijera (Rynchops niger)*



*Garza azul (Ardea herodias)*



*Zarapita (Numenius phaeopus)*



*Mapache (Procyon lotor)*



*Manatíes (Trichechus manatus)*



*Delfín (Tursiops truncatus)*



*Caimán americano (Alligator mississippiensis)*



*Serpiente coral (Micrurus fulvius)*



*Tortuga gopher (Gopherus polyphemus)*